

Chalet Abacus

The Chalet Abacus is most enjoyably situated with pleasant surroundings and very close to the centre of the village. (Not more than 5-10 minutes from the main transportation facilities, skilifts and cable cars.) It is an apartment with a big garden / playground in front of the house with a climbing wall, table tennis, trampoline, barbecue facilities. Laundry and Internet Corner in the house.

Chalet Abacus (2-4 persons - 55 m²)

Facts:

Living room with sitting area and Matterhornview
1 double room with 2 beds(90x200cm)
1 living-sleeping room upstairs with 2 beds (90x200cm), sitting area
Kitchen with oven, dish-washer, coffee-machine
Bathroom/toilet; Hairdryer, cosmetic mirror, shampoo and soap
Big balcony with sitting area and Matterhornview
Big garden in front of the house

Laundry in the main building
Ski room with ski boot dryer
Highspeed Internet WLAN included
Digital cable-TV, radio, DVD and telephone

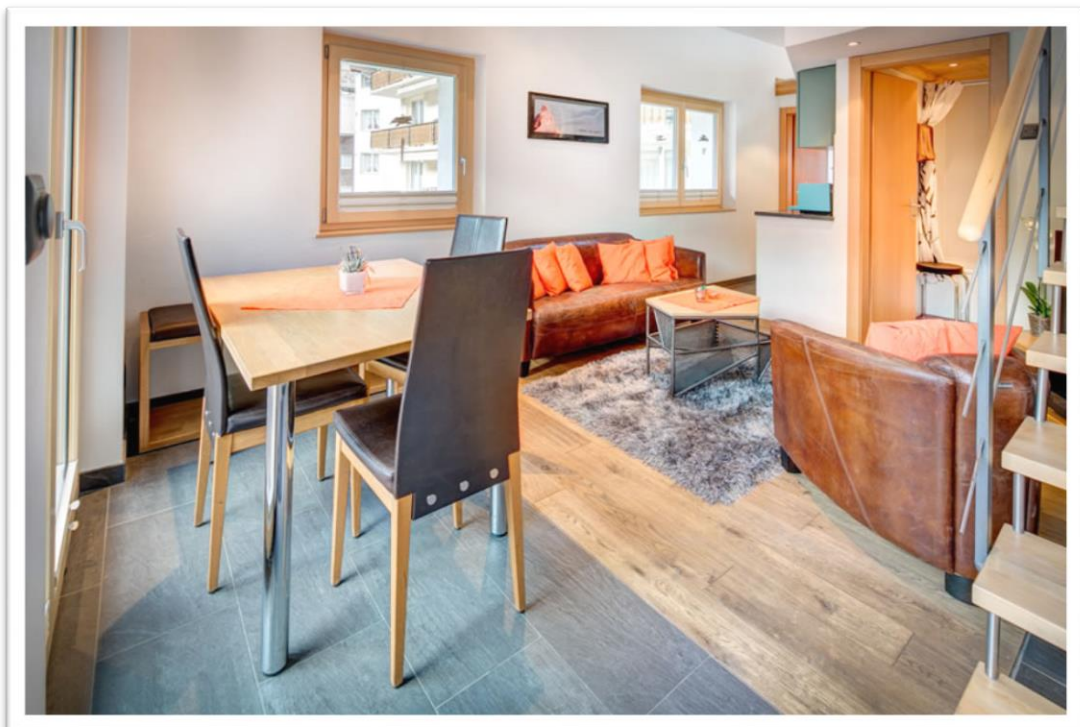
Fresh towels in the middle of the week.

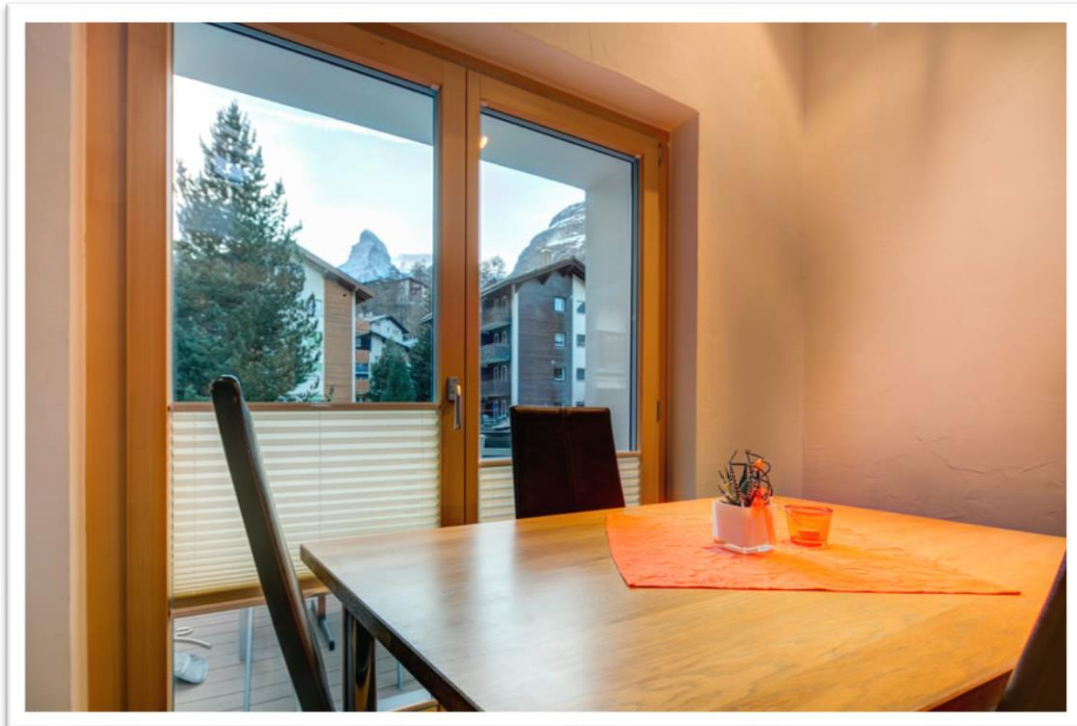
About 5-7 min. to the center of Zermatt
About 5-7 min. to the main cable car

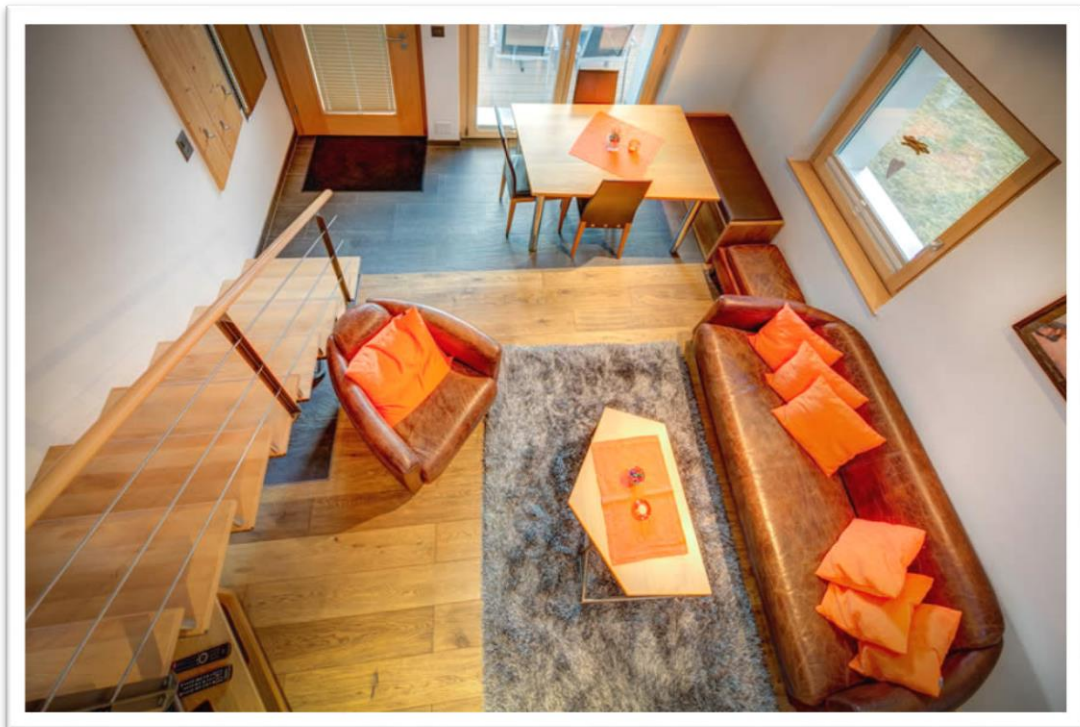
Very sunny...

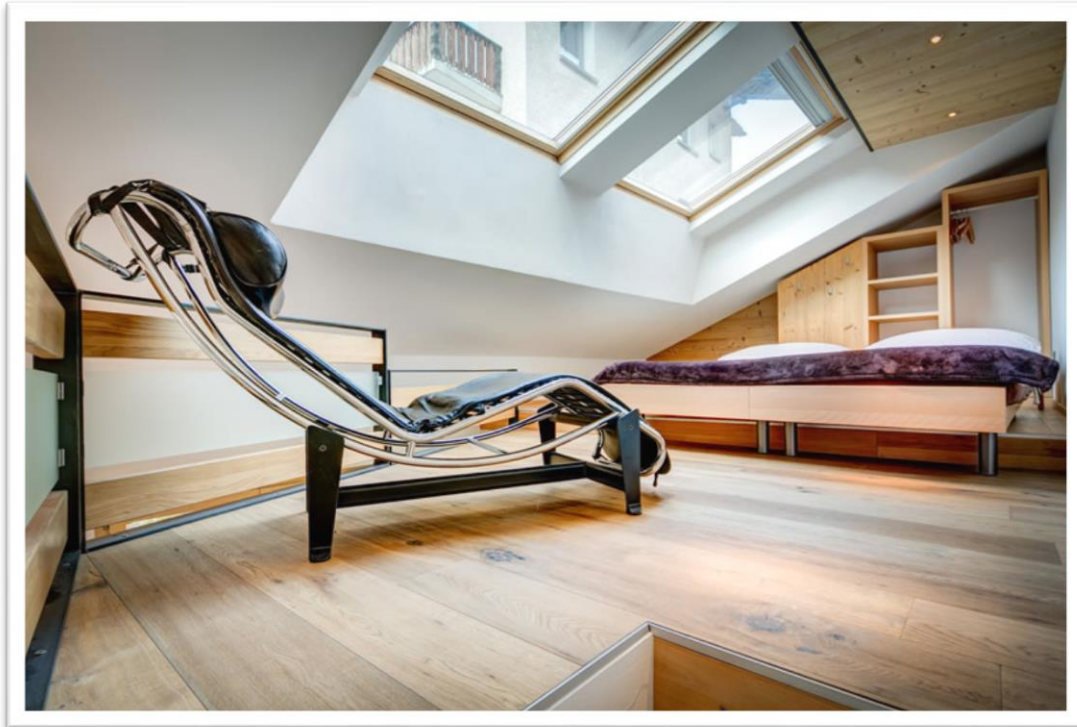


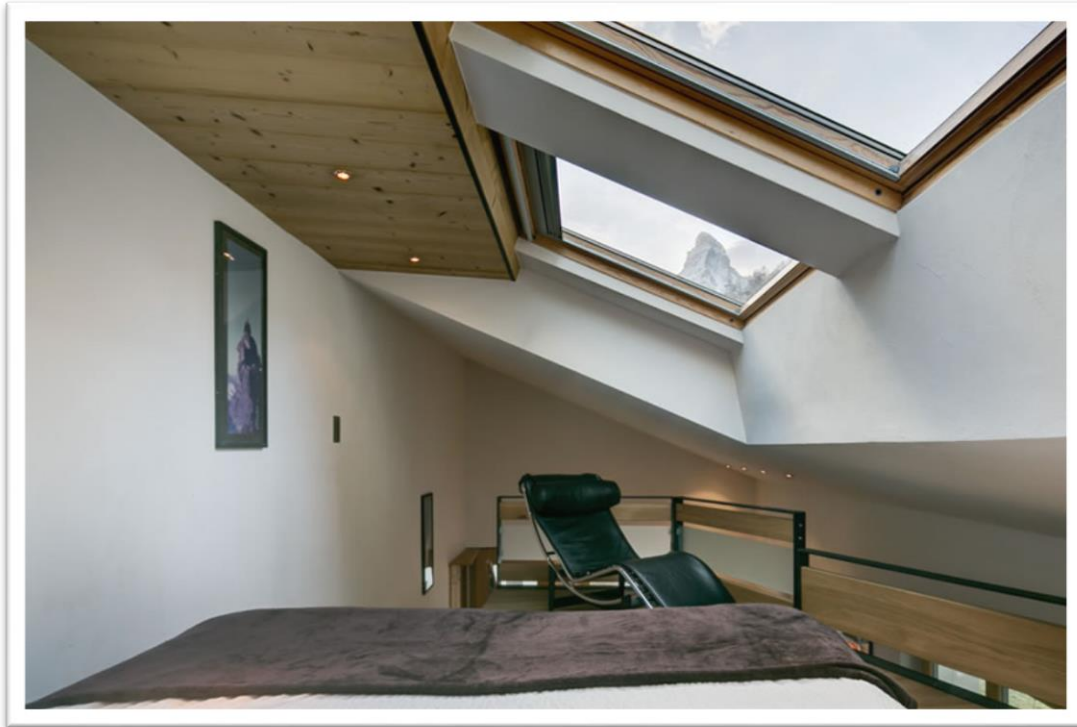
Picture gallery Chalet Abacus

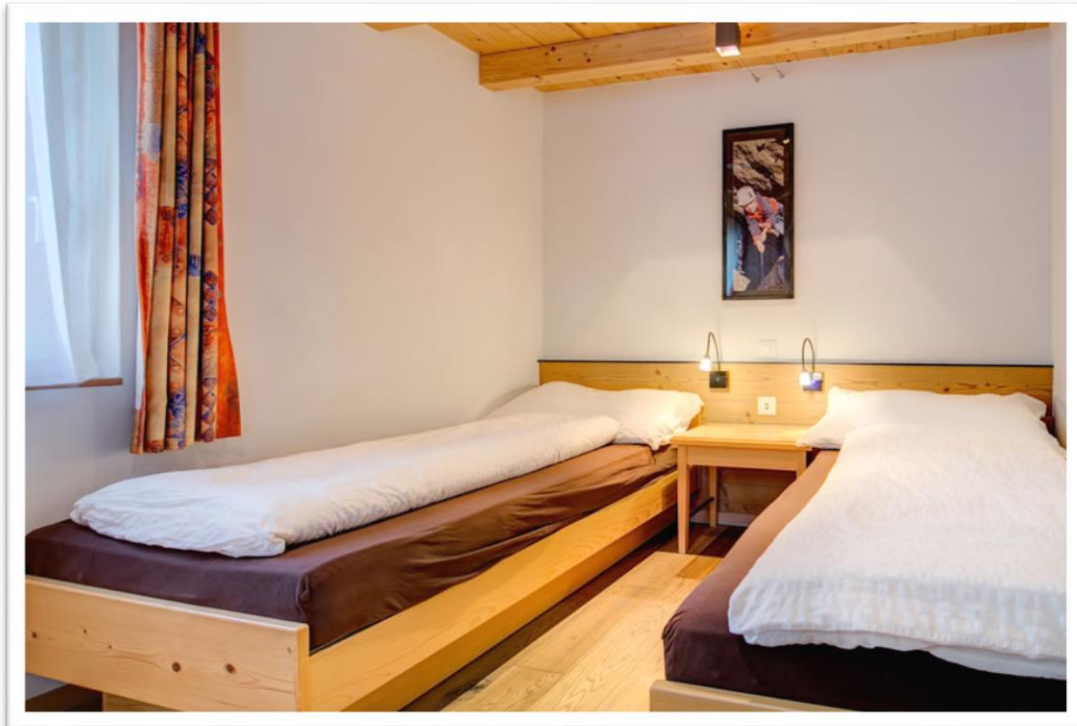
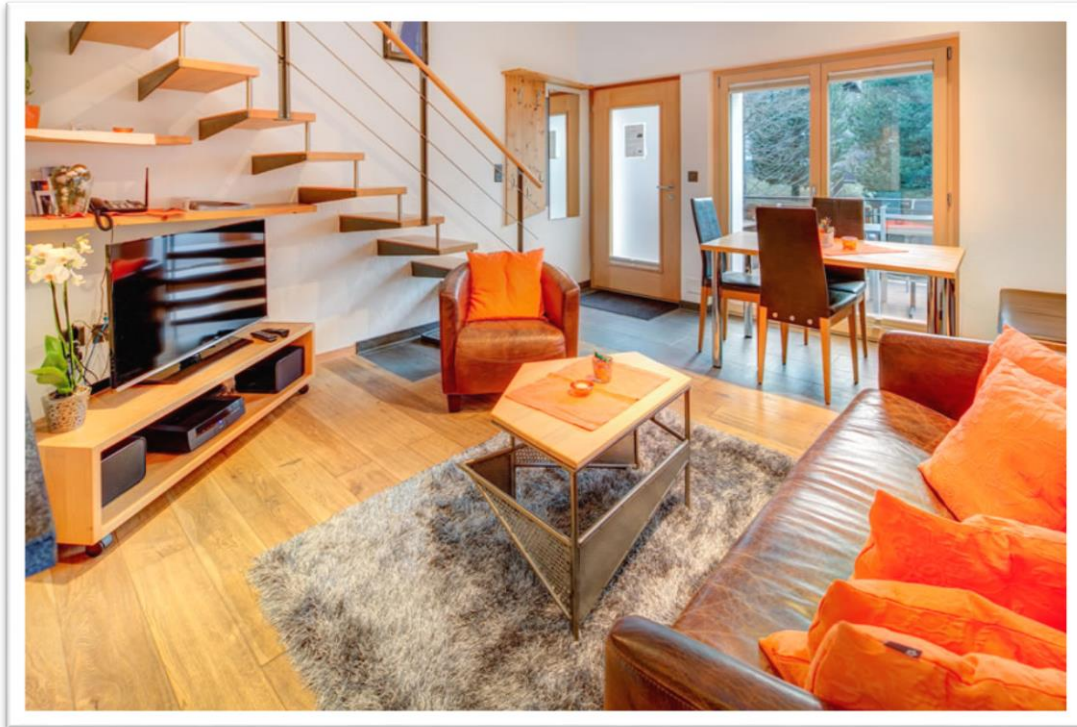




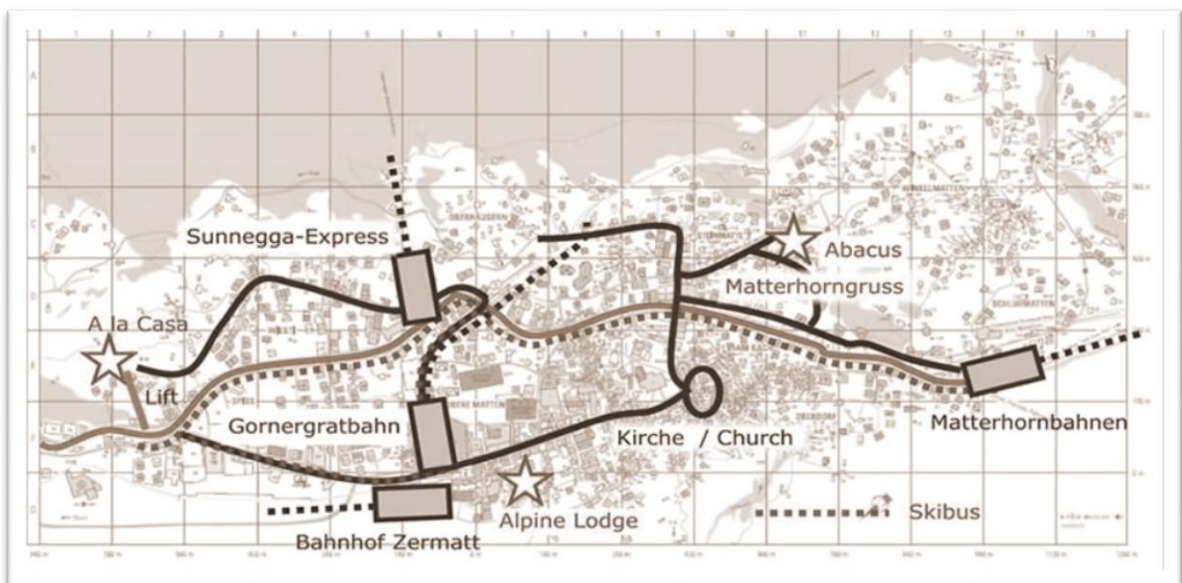
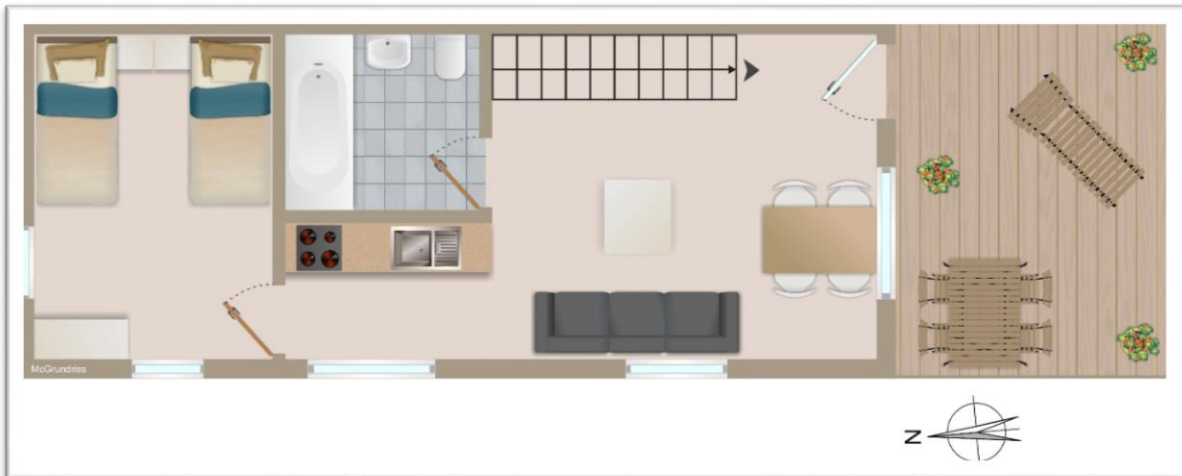














We would be delighted to count you among our valued guests.

Fam. Perren