

Chalet Alpine Lodge

In the centre of Zermatt, only about 200 ft. from the railway station, skibus station and Gornergrat railway away. Many restaurants, bakeries and shops just next door.

Chalet Alpine Lodge (2 persons - 32 m²)

Facts:

Separate living room/sitting area.
Kitchen with oven, microweave, dish-washer.
1 double room with 2 beds(90x200cm)
Sunny balcony to the east side(main street)
Bathroom/toilet. Hairdryer, cosmetic mirror, shampoo and soap.
Apartments with Matterhorn view (2. and 3. floor)

Highspeed Internet Wlan included
Digital Cabel-TV, Radio, DVD and telephone.

Heated ski locker in the entrance.

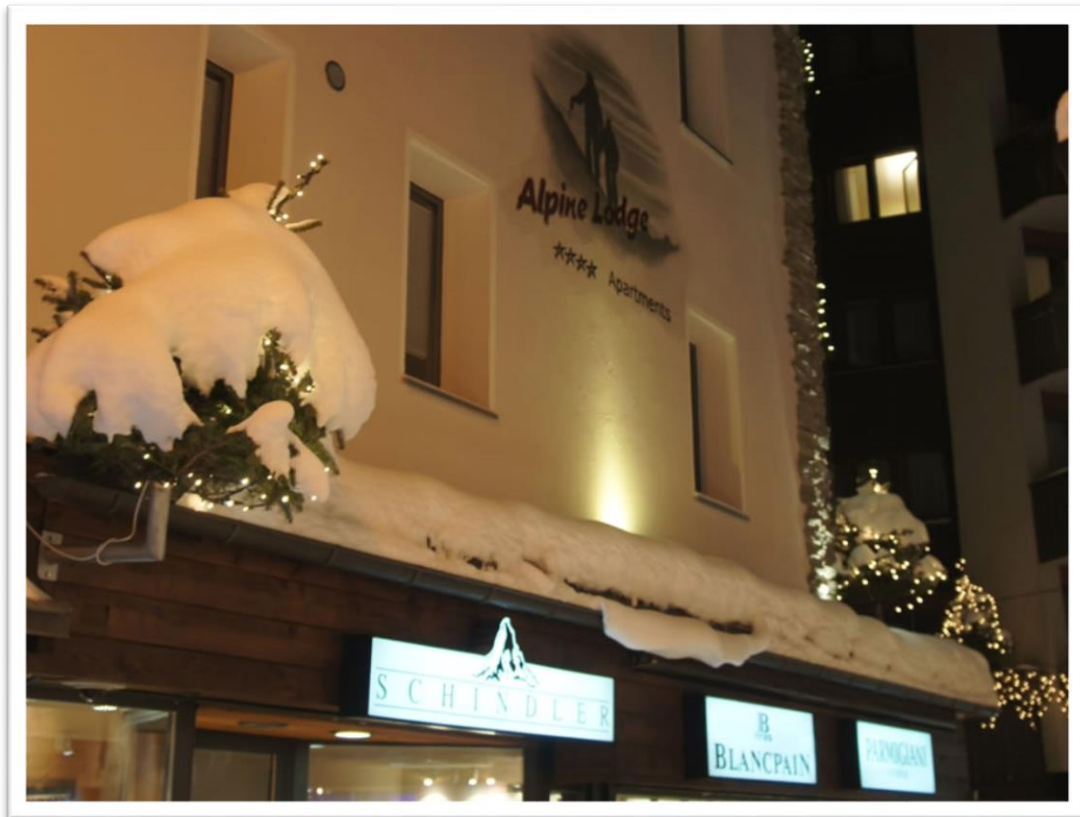
Fresh towels in the middle of the week.

In the heart of Zermatt, only about 200 ft. to the railwaystation, skibus and Gornergratbahn.

Many restaurants, shops and bakeries just next door.

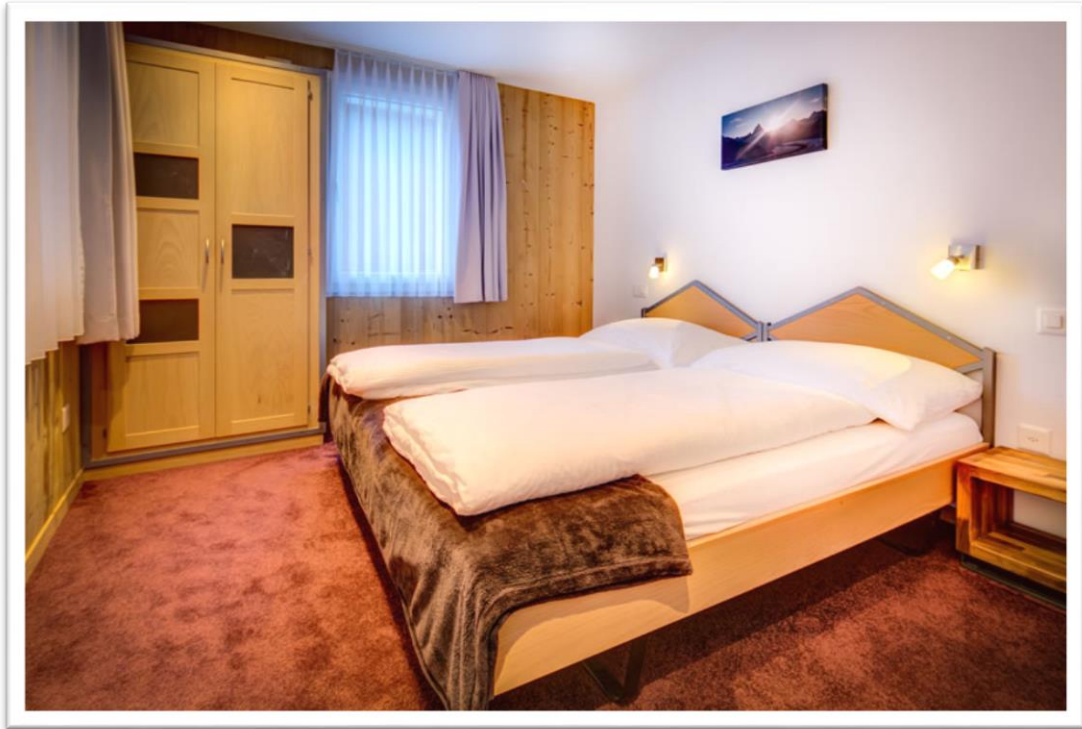


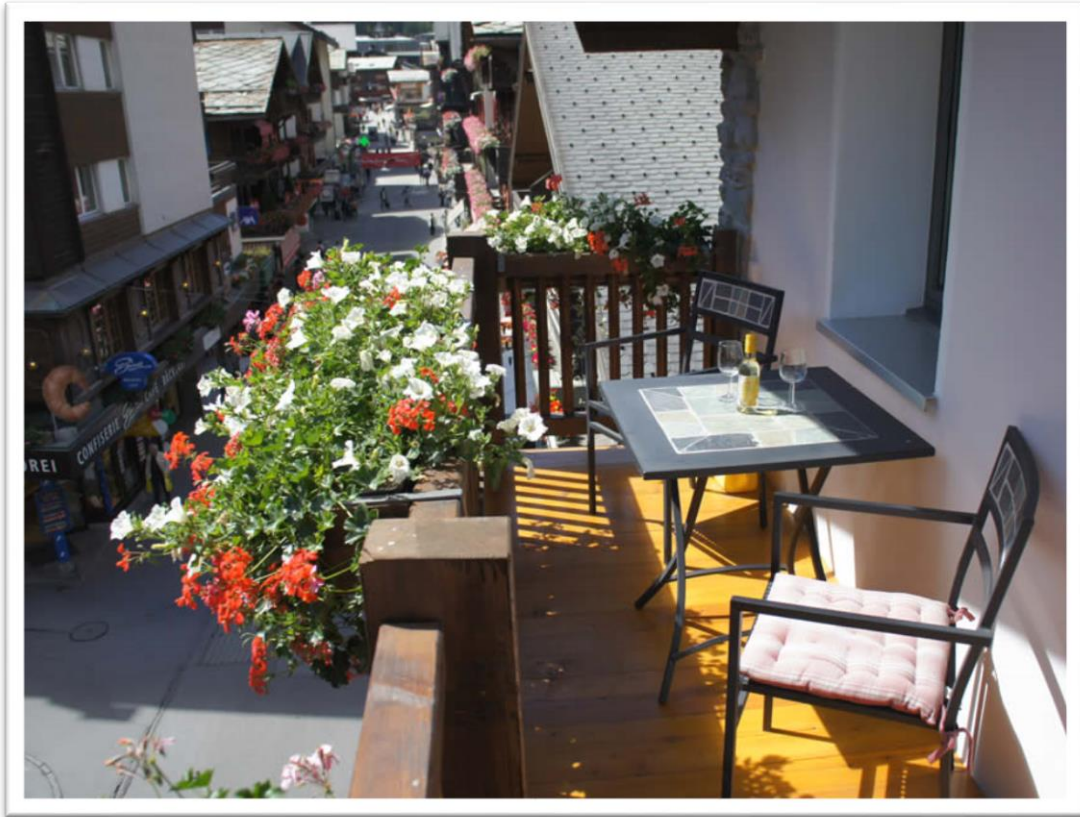
Picture gallery - Chalet Alpine Lodge

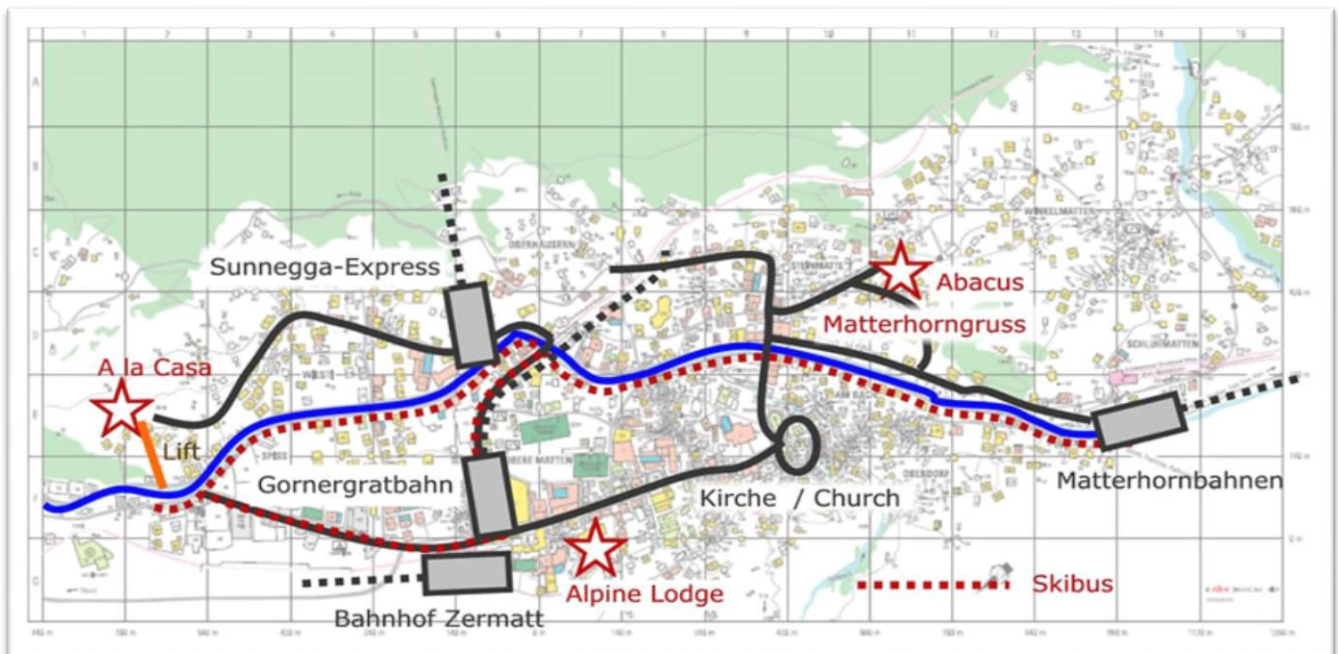














We would be delighted to count you among our valued guests.

Fam. Perren